



HPS.05.257.100

Revision: 01

Hauptständer Centre Stand

SUZUKI DL 650

Montagehinweise

Alle vom Motorrad gelösten Schrauben sind gemäß Herstellerangaben wieder zu montieren, oder mit von SW-MOTECH gelieferten Schrauben zu ersetzen. Falls nicht anderweitig definiert, diese Schrauben nach Tabelle anziehen.

M6	9,6 Nm
M8	23 Nm
M10	46 Nm

Gegebenenfalls Schrauben mit flüssiger Schraubensicherung einkleben.

Prüfen Sie nach 50 km alle Verbindungen auf festen Sitz.

Die Kurvenfreiheit kann durch einen Hauptständer eingeschränkt werden

SW-MOTECH GmbH & Co. KG
Bahnhofstrasse 44d
35282 Rauschenberg
-Germany-

Tel.: ++ 49 (0) 6425 816 800
Fax: ++ 49 (0) 6425 816 810

www.sw-motech.com

Mounting Instructions

Centerstand cornering clearance:

SW-MOTECH centerstands are carefully designed and tested to eliminate reductions in cornering clearance and ground clearance under most driving conditions on an unmodified stock motorcycle, and are certified to be compliant with European ABE safety standards. Use of any centerstand may reduce cornering clearance or ground clearance under extreme driving situations.

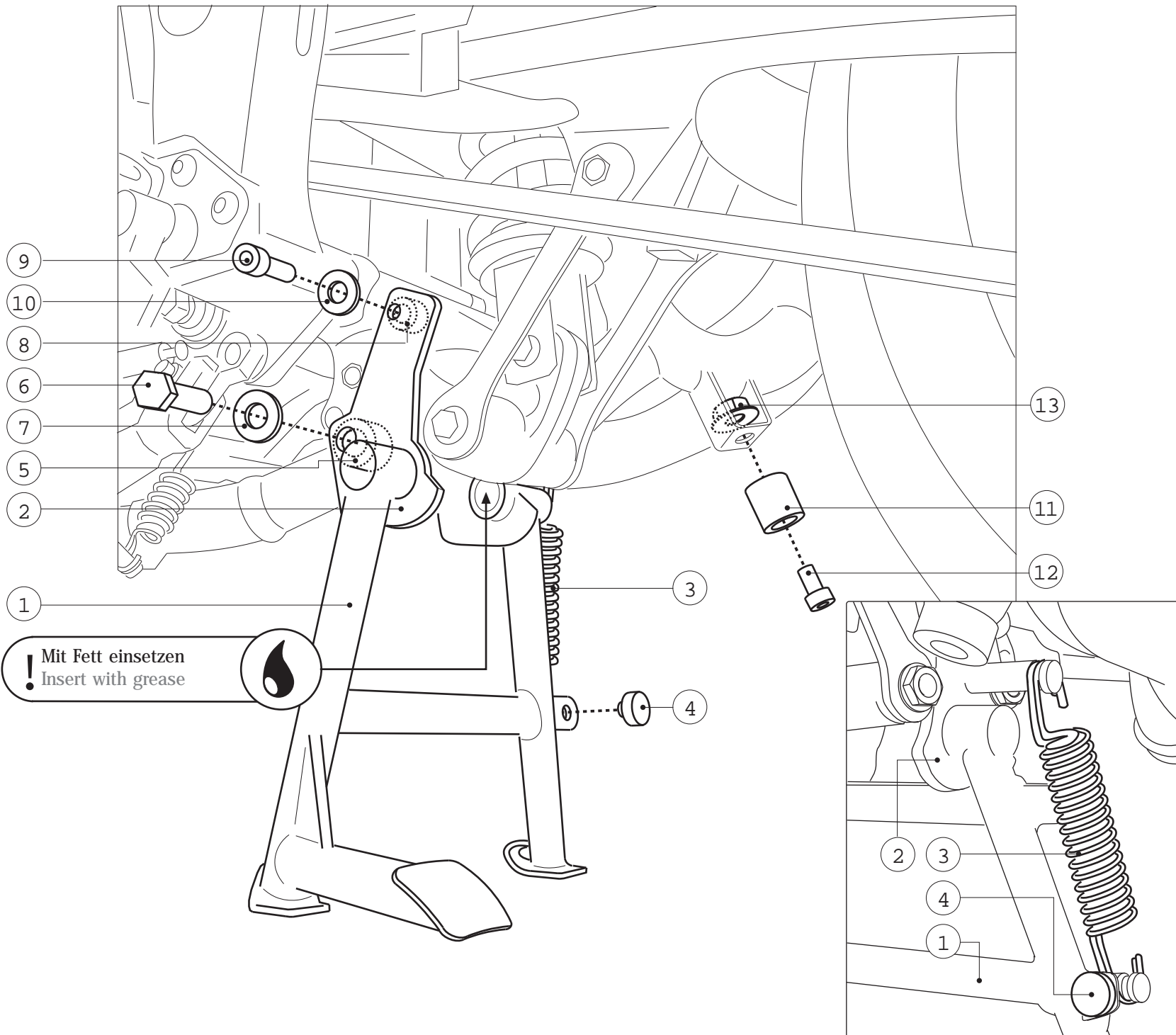
SW-MOTECH products should be installed by a qualified, experienced motorcycle technician. If you are unsure of your ability to properly install a product, please have the product installed by your local motorcycle dealer. SW-MOTECH takes no responsibility for damages caused by improper installation.

All screws, bolts and nuts, including all replacement hardware provided by SW-MOTECH, should be tightened to the torque specified in the OEM maintenance manual for your motorcycle. If no torque specifications are provided in the OEM maintenance manual, the following torques may be used:

M6	9,6 Nm
M8	23 Nm
M10	46 Nm

All screws, bolts and nuts should be checked after driving the first 50 km to ensure that all are tightened to the proper torque.

Medium strength liquid thread-locker (i.e., "Loctite") should be used to secure all screws, bolts and nuts.




! Mit Fett einsetzen
Insert with grease

! Alle Schrauben mit
Schraubensicherung einsetzen.
Insert all screws with retainer.

! Achtung:
Die Kurven- und Bodenfreiheit kann
durch einen Hauptständer
eingeschränkt werden.
Attention:
Cornering and ground clearance can
be reduce by using a centre stand.


1 Hauptständer
Centre Stand



HPS.05.257.900

Anzahl/ Pcs. 1


5 Distanzbuchse
Spacer



Da:20 Di:10,5 h:9

Anzahl/ Pcs. 2


8 Distanzbuchse
Spacer



Da:20 Di:8,5 h:9

Anzahl/ Pcs. 2

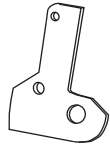
11 Anschlag
Buffer



HPS.01.252.002/1

Anzahl/ Pcs. 1

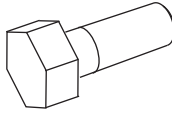
2 Rahmenbefestigung
Frame Plates



HPS.05.257.901/902

Anzahl/ Pcs. 2(R/L)

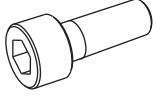
6 Sechskantschraube
Hexagon Screw



M10x1,25x35 DIN 961

Anzahl/ Pcs. 2

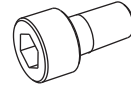
9 Innensechskant-
schraube
Hexagon Socket
Screw



M8 x 35 DIN 912

Anzahl/ Pcs. 2


12 Innensechskant-
schraube
Hexagon Socket
Screw



M8 x 16 DIN 912

Anzahl/ Pcs. 1

3 Zugfedersatz Stahl
chr.
Spring Set



ZFD.00.150.009/ST

Anzahl/ Pcs. 1

7 Unterlegscheibe
Washer



A 10,5 DIN 125

Anzahl/ Pcs. 2

10 Unterlegscheibe
Washer



A 8,4 DIN 125

Anzahl/ Pcs. 2

13 Mutter selbstsichernd
Lock Nut



M8 DIN 6927

Anzahl/ Pcs. 1

4 Gummianschlag
Rubber Element



MSS.00.003.016

Anzahl/ Pcs. 1