



HPS.06.290.100
Revision: 00

Hauptständer Centre Stand

YAMAHA XT660

Montagehinweise

Alle vom Motorrad gelösten Schrauben sind gemäß Herstellerangaben wieder zu montieren, oder mit von SW-MOTECH gelieferten Schrauben zu ersetzen. Falls nicht anderweitig definiert, diese Schrauben nach Tabelle anziehen.

M6	9,6 Nm
M8	23 Nm
M10	46 Nm

Gegebenenfalls Schrauben mit flüssiger Schraubensicherung einkleben.

Prüfen Sie nach 50km alle Verbindungen auf festen Sitz.

Die Kurvenfreiheit kann durch einen Hauptständer eingeschränkt werden

SW-MOTECH GmbH & Co. KG
Bahnhofstrasse 44d
35282 Rauschenberg
-Germany-

Tel.: ++ 49 (0) 6425 816 800
Fax: ++ 49 (0) 6425 816 810

www.sw-motech.com

Mounting Instructions

Centerstand cornering clearance:
SW-MOTECH centerstands are carefully designed and tested to eliminate reductions in cornering clearance and ground clearance under most driving conditions on an unmodified stock motorcycle, and are certified to be compliant with European ABE safety standards. Use of any centerstand may reduce cornering clearance or ground clearance under extreme driving situations.

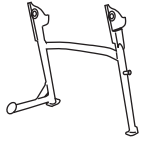


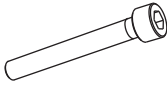
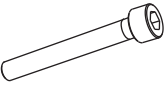
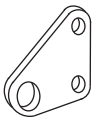


SW-MOTECH products should be installed by a qualified, experienced motorcycle technician. If you are unsure of your ability to properly install a product, please have the product installed by your local motorcycle dealer. SW-MOTECH takes no responsibility for damages caused by improper installation.

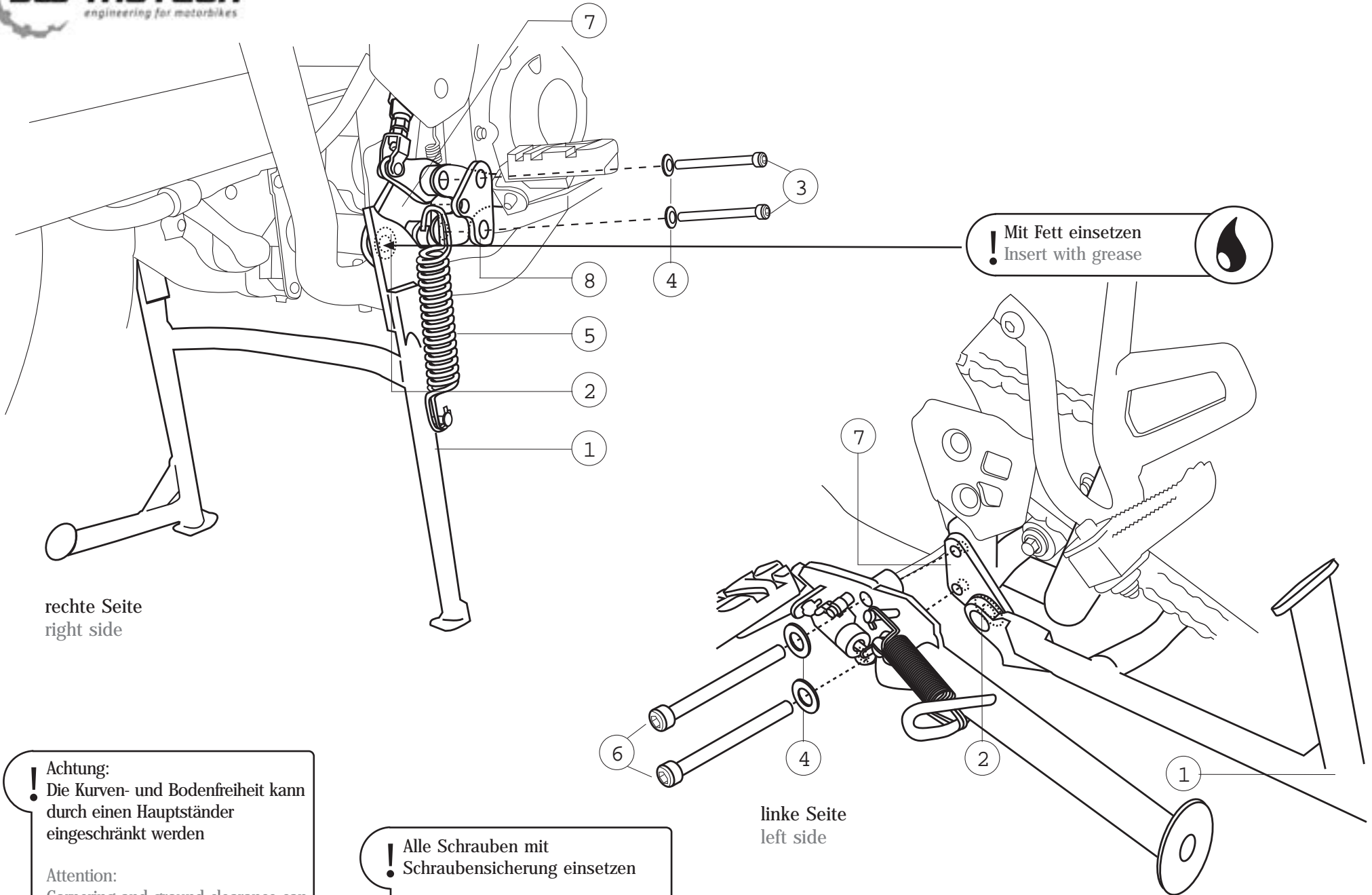
All screws, bolts, and nuts, including all replacement hardware provided by SW-MOTECH, should be tightened to the torque specified in the OEM maintenance manual for your motorcycle. If no torque specifications are provided in the OEM maintenance manual, the following torques may be used:


M6	9,6 Nm
M8	23 Nm
M10	46 Nm

All screws, bolts, and nuts should be checked after driving the first 50 km to ensure that all are tightened to the proper torque.

Medium strength liquid thread-locker (i.e., "Loctite") should be used to secure all screws, bolts, and nuts.

<p>1 Hauptständer Centre Stand</p>  <p>HPS.06.290.900</p> <p>Anzahl/ Pcs. 1</p>	<p>5 Zugfedersatz Spring Set</p>  <p>ZFD.00.150.007</p> <p>Anzahl/ Pcs. 1</p>
<p>2 Unterlegscheibe Washer</p>  <p>A 21 DIN 125</p> <p>Anzahl/ Pcs. 2</p>	<p>6 Zylinderschraube mit Innensechskant Hexagon Socket Screw</p>  <p>M10x1,25x50 DIN 912</p> <p>Anzahl/ Pcs. 2</p>
<p>3 Zylinderschraube mit Innensechskant Hexagon Socket Screw</p>  <p>M10x1,25x70 DIN 912</p> <p>Anzahl/ Pcs. 2</p>	<p>7 Anbaublech Fixing Lug</p>  <p>HPS.06.290.001/1</p> <p>Anzahl/ Pcs. 2</p>
<p>4 Unterlegscheibe Washer</p>  <p>A 10,5 DIN 125</p> <p>Anzahl/ Pcs. 4</p>	<p>8 Federanlenkblech Fixing Lug</p>  <p>HPS.06.290.001/4</p> <p>Anzahl/ Pcs. 1</p>



! Mit Fett einsetzen
! Insert with grease 

rechte Seite
right side

linke Seite
left side

! Achtung:
Die Kurven- und Bodenfreiheit kann durch einen Hauptständer eingeschränkt werden

Attention:
Cornering and ground clearance can be reduce by using a centre stand

! Alle Schrauben mit Schraubensicherung einsetzen
Insert all screws with retainer